



APPLICATION

A variety of water and chemical transfer and pressure applications. Other uses may include general water transfer. Benefits include a heavy-duty, thermally protected, CE compliant sealed motor and a self-priming 4-chamber design. This pump has a unique co-molded diaphragm and can run dry without damage.

PUMP DESIGN

Type: 4 Chamber Diaphragm pump
 Ports: ½"-14 NPSM-Male
 Liquid: 130°F [54°C] Max
 Dry-Prime: 6 feet [1.82 M]
 Run Dry: Yes
 Inlet Pressure: 30 PSI Max. [2.06 Bar]

ELECTRICAL

Motor: 12V DC Permanent Magnet, Intermittent Duty
 Protection: Thermal Overload, Automatic Restart
 Leads: 14 AWG, 14 ¾" [37 cm] Red +, Black -
 Fuse: 20 Amp Recommended
 Control: Shut-Off: 60 PSI [4.1 Bar] ± 2 PSI [0.13 Bar]
 Re-start: 45 PSI [3.1 Bar] ± 2 PSI [0.13 Bar]

MATERIALS OF CONSTRUCTION

Housings: Polypropylene
 Valves/Seals: VITON
 Diaphragm: Santoprene/Polypropylene, Co-Molded
 Hardware: Stainless Steel and Zinc Plated Steel

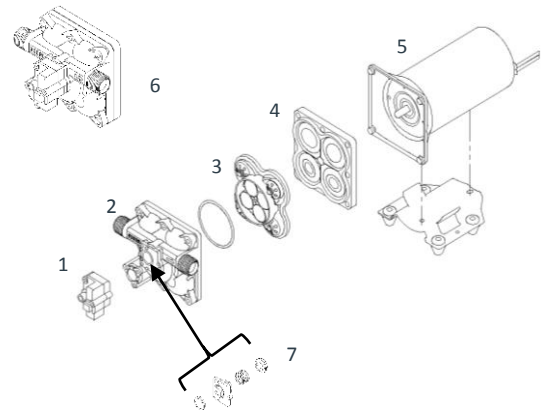
AGENCY APPROVALS

Ignition Protection 8846, CE

SHIPPING INFORMATION

Net Weight: 7.9 Pounds [3.5 Kg] ea.
 Carton Qty.: 6
 Carton Weight: 50 Lbs. [22.6 Kg]
 Carton Size: 24"L X 18"W X 6"H [61cm x 46cm x 15cm]

REPAIR KITS



| Number | Description | Part Number |
|---------------|-----------------|---------------|
| 1 | Pressure Switch | 94-910-02 |
| 1,2 | Upper Assembly | 94-910-01 |
| 3 | Valve Assembly | 94-910-05 |
| 4 | Drive Assembly | 94-910-04 |
| 5 | Motor/Gasket | 94-71-000-17 |
| 6 (1,2,3,4,7) | Pump Head | 94-910-00 |
| 7 | Check Valve | 94-910-03 |
| Not Shown | Upper Housing | 94-21-1551-00 |

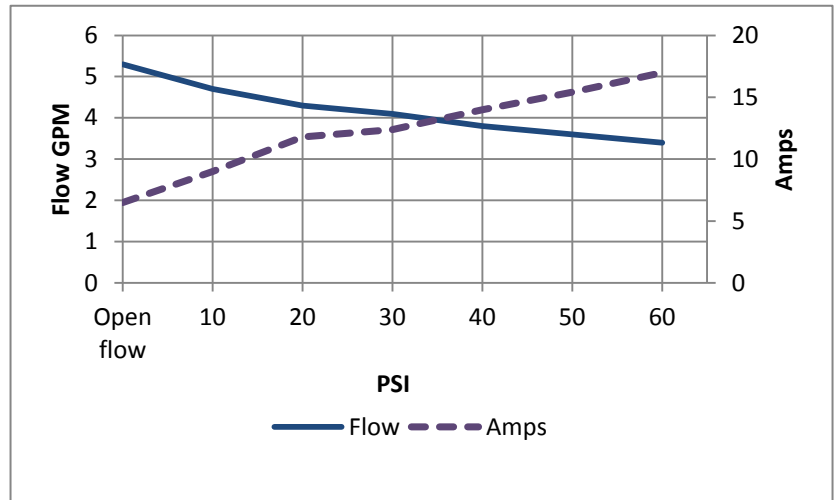
SHURFLO® 5000 SERIES PUMPS

*PERFORMANCE

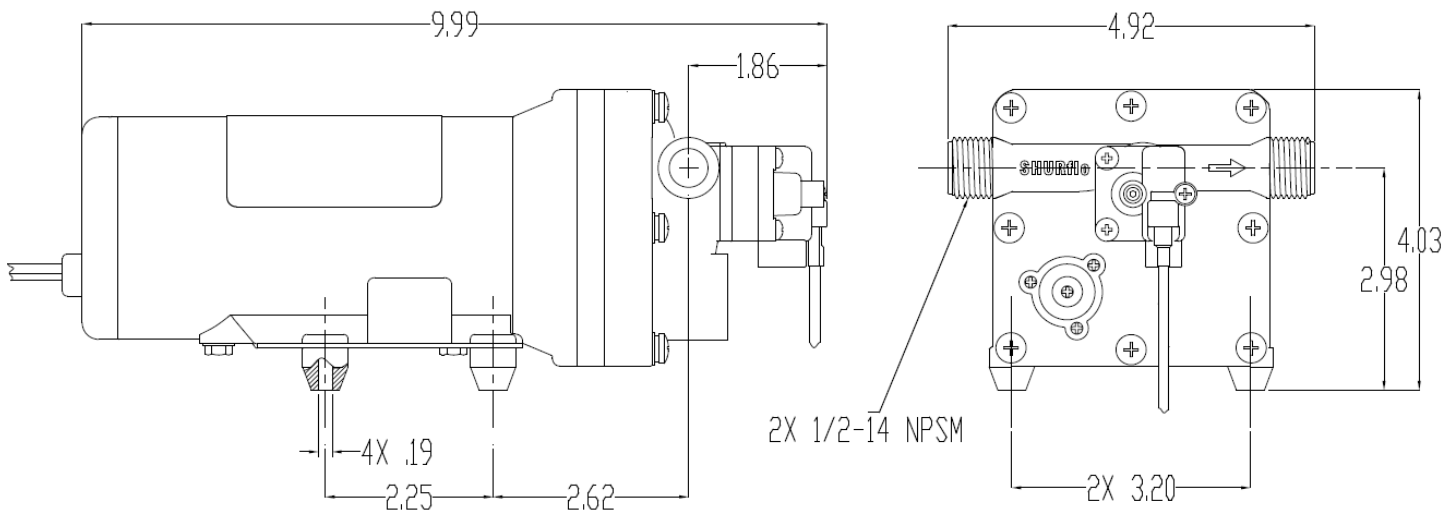
TYPICAL PERFORMANCE AT 12V

| PRESSURE | | FLOW | | CURRENT |
|----------|-----|------|------|---------|
| BAR | PSI | GPM | LPM | AMPS |
| 0 | 0 | 5.3 | 20 | 6.5 |
| 0.7 | 10 | 4.7 | 17.7 | 9.0 |
| 1.4 | 20 | 4.3 | 16.2 | 11.8 |
| 2.1 | 30 | 4.1 | 15.5 | 12.4 |
| 2.8 | 40 | 3.8 | 14.3 | 14.0 |
| 3.4 | 50 | 3.6 | 13.6 | 15.4 |
| 4.1 | 60 | 3.4 | 12.8 | 17.0 |

*Typical Performance is for informational purposes only and can vary and should not be considered a design specification.



DIMENSIONS



FLOW MANAGEMENT SOLUTIONS

3545 Harbor Gateway South, Suite 103, Costa Mesa, CA 92626, (800) 854-3218 www.Pentair.com

All Pentair trademarks and logos are owned by Pentair, Inc. All other brand or product names are trademarks or registered marks of their respective owners. Because we are continuously improving our products and services, Pentair reserves the right to change specifications without prior notice.

Pentair is an equal opportunity employer.

PDS-5050-1311-D011 04/14 ©Pentair, Inc. All Rights Reserved